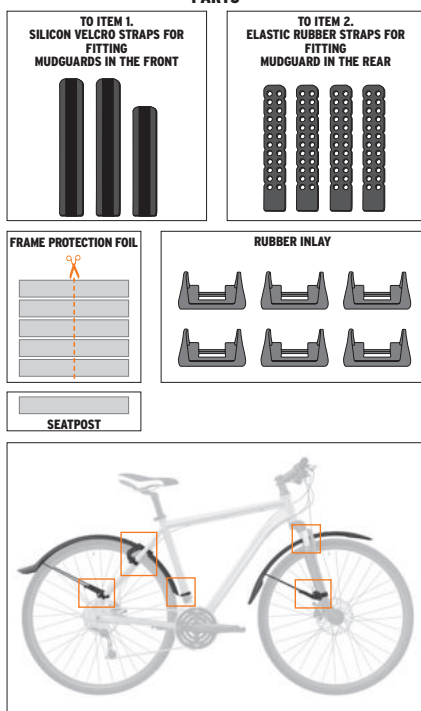
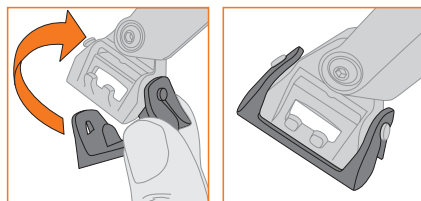


PARTS

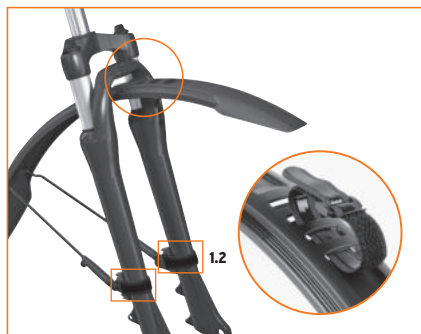
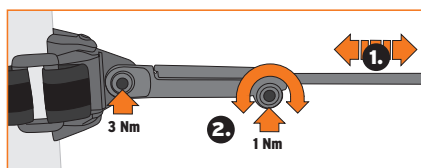
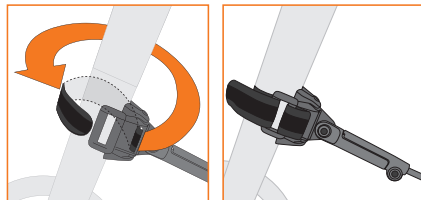


1. FENDER-ASSEMBLING FRONT

1.1 PREPARATION: MOUNTING RUBBER INLAY



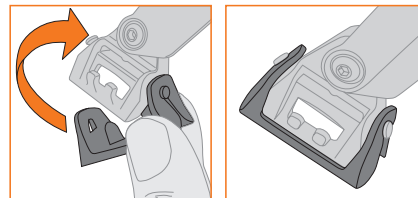
1.2



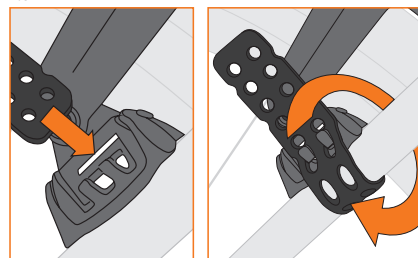
2. FENDER-ASSEMBLING REAR



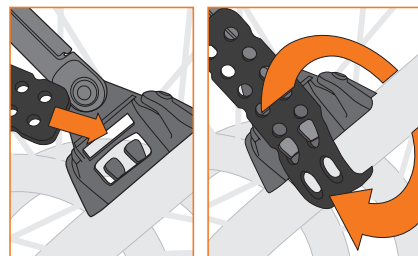
2.1 PREPARATION: MOUNTING RUBBER INLAY



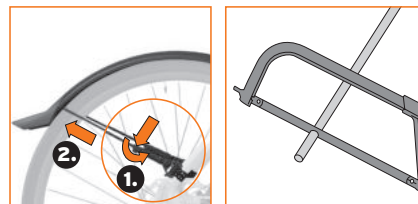
2.3



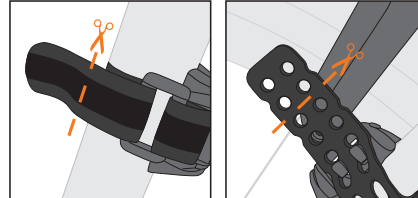
2.4



3. CUT STAYS



OPTIONAL



ATTENTION!
KEEP THE MINIMUM DISTANCE OF 15 MM BETWEEN
FENDER AND TYRE.

