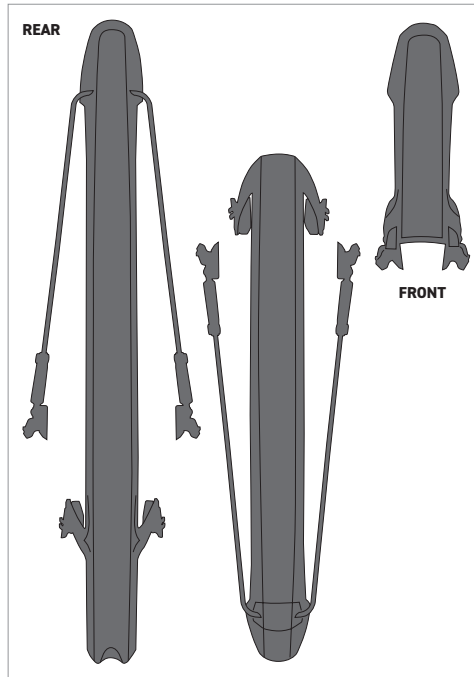
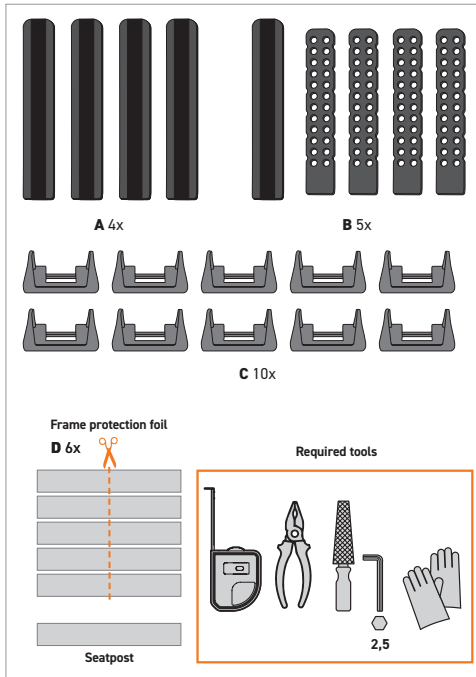
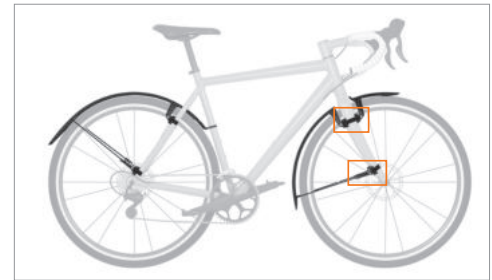


EN . Scope of delivery

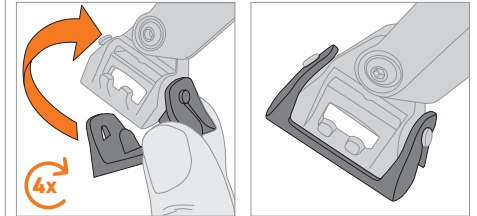


EN . Fender-assembling front

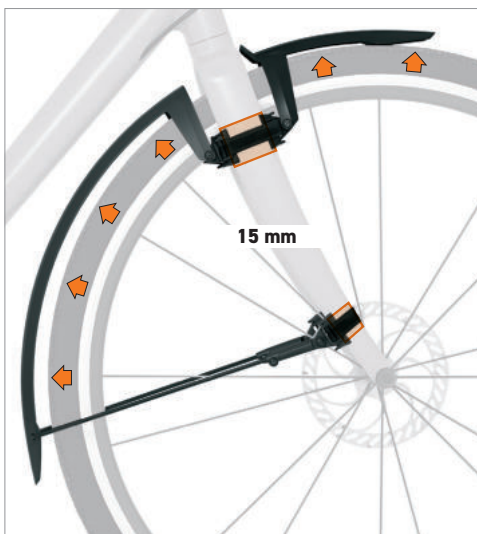


EN . Mounting rubber inlay & Fastening with velcro

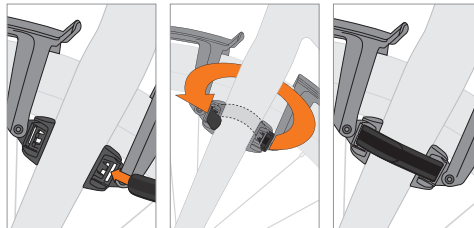
**01** EN  
Fit the rubber inserts **C** supplied to the fastening adapters.  
**Note.** Check for tight fit.



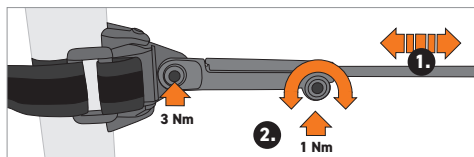
**02** EN  
Place the SPEEDROCKER on the bicycle frame and roughly align it. Then remove the SPEEDROCKER once again and stick the supplied protective film **D** onto the frame at the support points.  
**Note.** The surface must be clean and free of grease



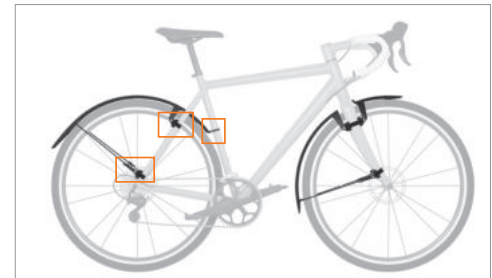
**03** EN  
Position the SPEEDROCKER mounting adapter on the protective film. Thread the Velcro strap **A** with the rubberized side facing the frame and pull tight.  
**Note.** Before each ride, check for tight fit and clean contact surfaces.



**04** EN  
Also attach the mounting adapters to the bicycle fork with the protective foils. Move the strut to the correct position depending on the frame size (1) and then tighten on the adapter (2).

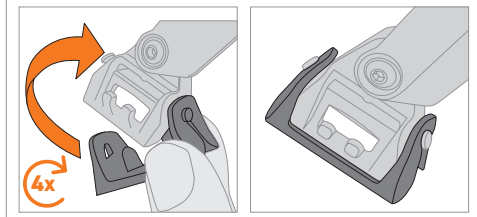


EN . Fender-assembling rear

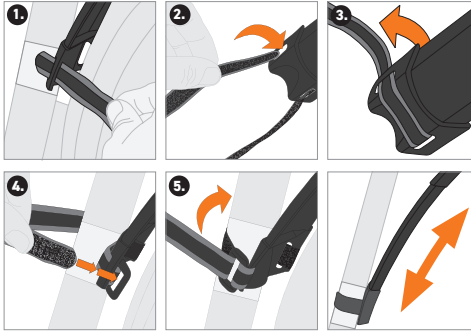


EN . Mounting rubber inlays & Fastening with velcro and rubber straps

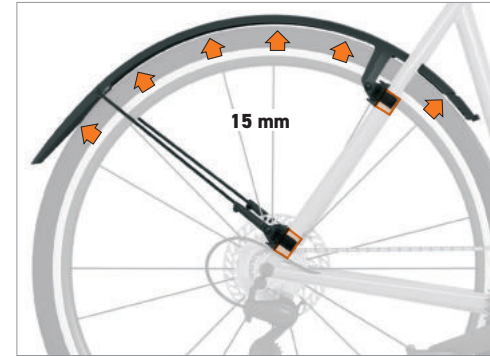
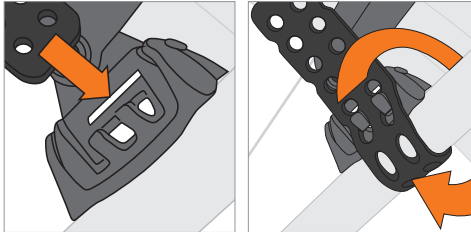
**01** EN  
Fit the rubber inserts **C** supplied to the fastening adapters.  
**Note.** Check for tight fit.



**02 EN** Place the SPEEDROCKER on the bicycle frame and roughly align it. Then remove the SPEEDROCKER once again and stick the supplied protective film **D** onto the frame at the support points.  
**Note.** The surface must be clean and free of grease.

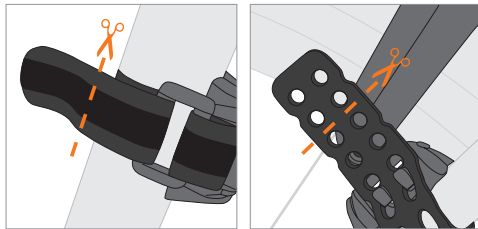


**04 EN** Position the SPEEDROCKER mounting adapter on the protective foil. Then thread the enclosed rubber straps **B** through the opening on the adapter and pull them forward. Then fasten them there via the eyelets.



**03 EN** Bring the SPEEDROCKER into position and attach it to the seat tube in the first step. To do this, thread the Velcro strap **B** with the rubberized side facing the seat tube over the protective film and tighten. If necessary, slide the extendable extension profile into the correct position.

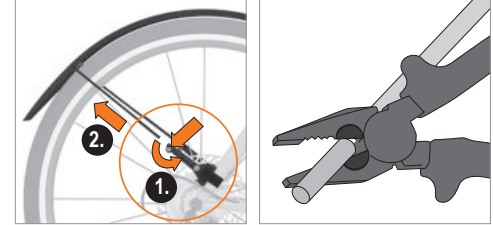
**07 EN** The Velcro and rubber straps **B** can be shortened after attachment.  
**Note.** Mount/shorten the velcro and rubber straps so that they cannot get caught in the wheel while riding.



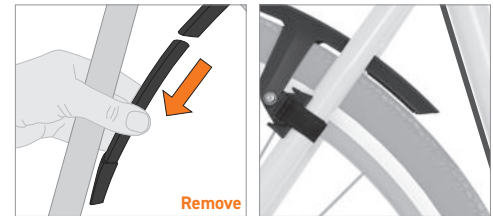
**CAUTION!**  
 Not suitable for suspension forks!

**EN . Individual adaptations**

**05 EN** Depending on the requirements, the struts can be easily shortened with suitable tools.



**06 EN** If your bike has a cable on the seat tube, the extension profile must be removed. Otherwise, the attachment may cause damage to the cable.



**EN . Safety instructions**

Carefully read the entire safety instructions and follow the instructions.

**Warning levels.**

Take note of and adhere to the warnings. Non-compliance can lead to injuries or damage to property!



**Caution!** Indicates hazards that can lead to injuries or damage to property.

**Safety instructions.**

Injury hazard. The product contains small parts that could be swallowed. Keep the product or individual components away from children.

Always mount SPEEDROCKER wheel guards using the mounting material supplied.

Not suitable for mounting on suspensions forks.

Check and retighten all Velcro fasteners & rubber straps regularly.

Keep a minimum distance of 15 mm between tread and tyre.

**Intended use.**

Use only for the intended use as a wheel guard. Any other use and/or structural alteration is considered to be not in accordance with the intended use and results in the expiry of the legal and contractual warranty for material defects and product liability.

**Disposal.**



Dispose of packaging material in accordance with the applicable national and regional regulations. When disposing of the product, follow the national and regional disposal regulations.



**Attention!** Regularly remove the mudguards and clean the contact surfaces to the bicycle underneath!